

How to extend the ID length for Access Manager Pro

Extention Tool for the ID length on ACM Pro

* Pre-caution before extending the ID length

- The Authentication log data & System Logs will be deleted all after extending.
- The Access Server should be re-started after extending.

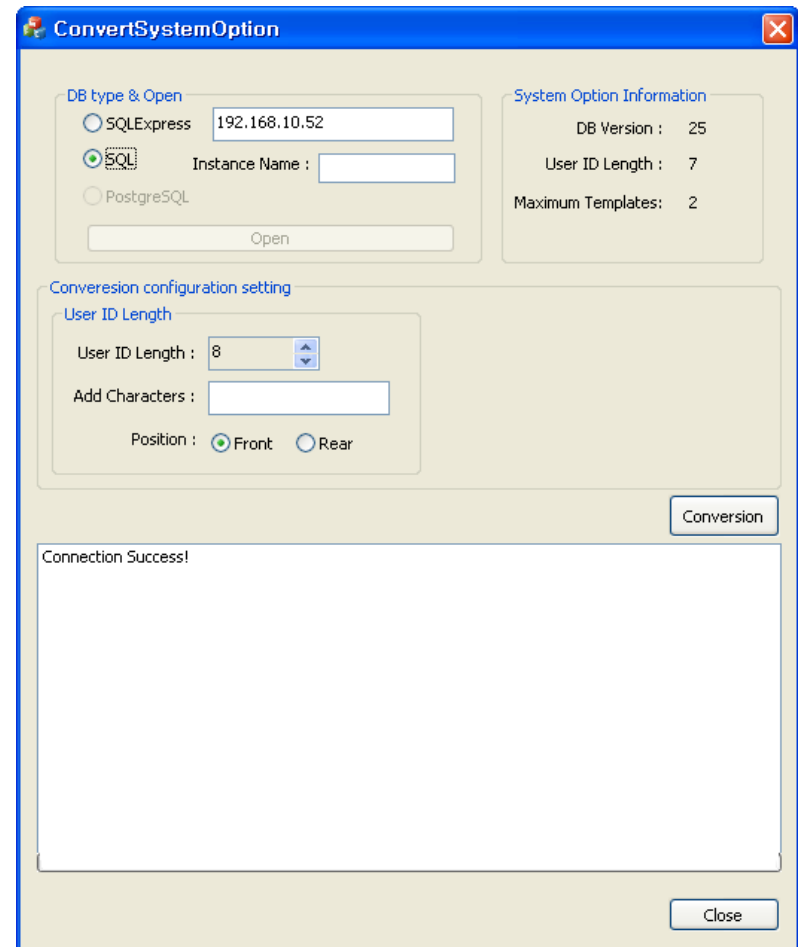
* Steps for extending the ID length

Step1> Execute the Tool, "ConvertSystemOption.exe"

Step2> Select the DB type between Express or not

Step3> Insert the IP address of the DB server

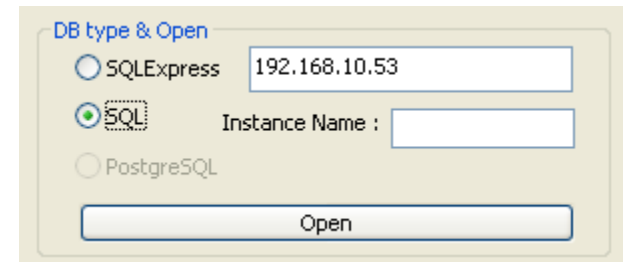
Step4> If you have the instance name of your SQL DB, you have to insert it, too.



Step5> Click to the button, "Open"

Step6> If the connection was succeeded, you can find the current system option information.

Step7> If you failed to connect the DB server, you have to check if the previous steps were right or not.



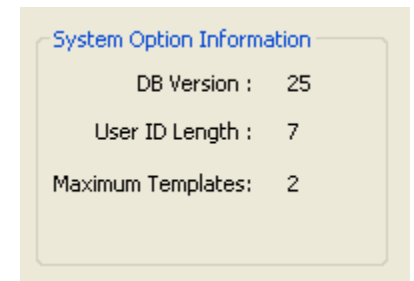
DB type & Open

☐ SQLExpress 192.168.10.53

☒ SQL Instance Name :

☐ PostgreSQL

Open



System Option Information

DB Version : 25

User ID Length : 7

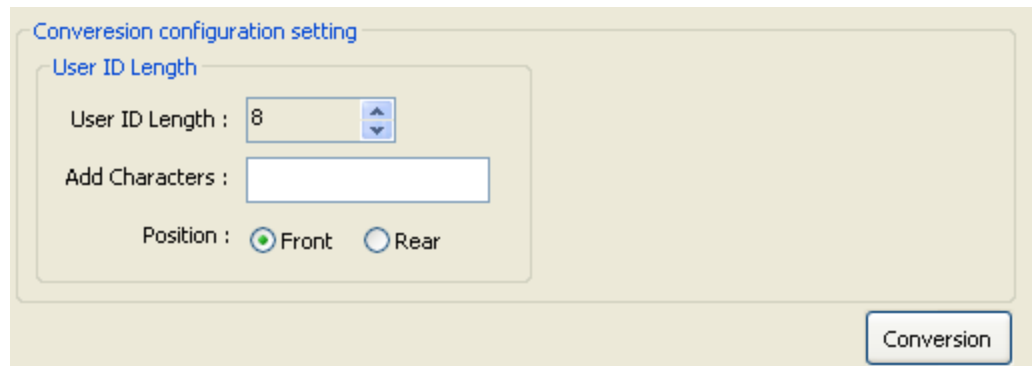
Maximum Templates: 2

Step8> Have to insert the digits for the target ID length what you want

Step9> You can add not only the digits but also the characters with filling the blank,
"Add Characters"

Step10> Select the position where the added characters are located in the existed ID
between Front and Rear

Step11> Click to the button, "Conversion"



The screenshot shows a 'Conversion configuration setting' dialog box with a light beige background. Inside, there is a section titled 'User ID Length' in blue. Below this title, the 'User ID Length' is set to '8' in a text box with a small blue up/down arrow button to its right. Below that, the 'Add Characters' field is an empty white text box. At the bottom of this section, the 'Position' is set to 'Front' with a selected radio button, and 'Rear' is an unselected option. A 'Conversion' button is located at the bottom right of the dialog box.

Conversion configuration setting

User ID Length

User ID Length : 8

Add Characters :

Position : ☒ Front ☐ Rear

Conversion

Step12> If the conversion completed without failure, you can find the result as belows.

Step13> Restart the Access Server after restarting MS SQL Server service.

